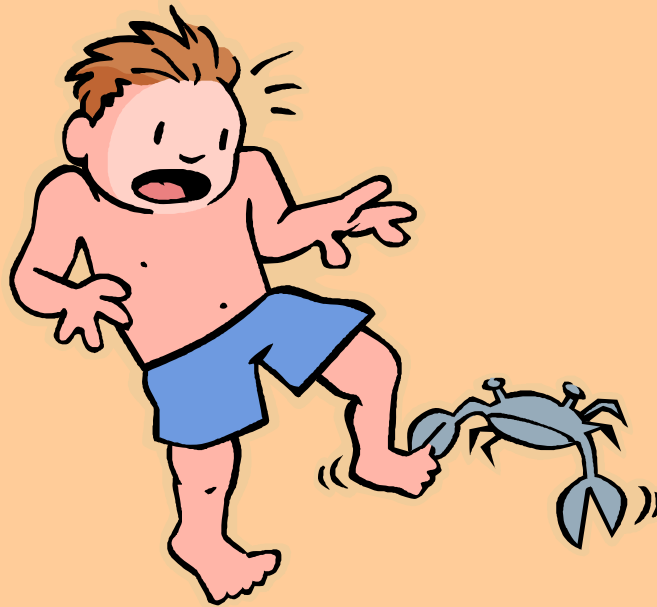


ab Family Word Slide

ab



ab Family Word Slide
(Sound Blending)

Print on vellum, cut, and laminate for durability. Cut the top and bottom slits to the left of the rime chunk for the slide. Model proper use for students: blending to form and say new words.

bl

c

cr

d

dr

f

fl

g

gr

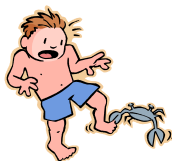
j

l

n

sc

t



ace Family Word Slide

____ ace



ace Family Word Slide
(Sound Blending)

Print on vellum, cut, and laminate for durability. Cut the top and bottom slits to the left of the rime chunk for the slide. Model proper use for students: blending to form and say new words.

br

f

gr

l

p

pl

r



ack Family Word Slide

____ack



ack Family Word Slide
(Sound Blending)

Print on vellum, cut, and laminate for durability. Cut the top and bottom slits to the left of the rime chunk for the slide. Model proper use for students: blending to form and say new words.

b

bl

cr

j

kn

l

p



qu

r

s

sh

sm

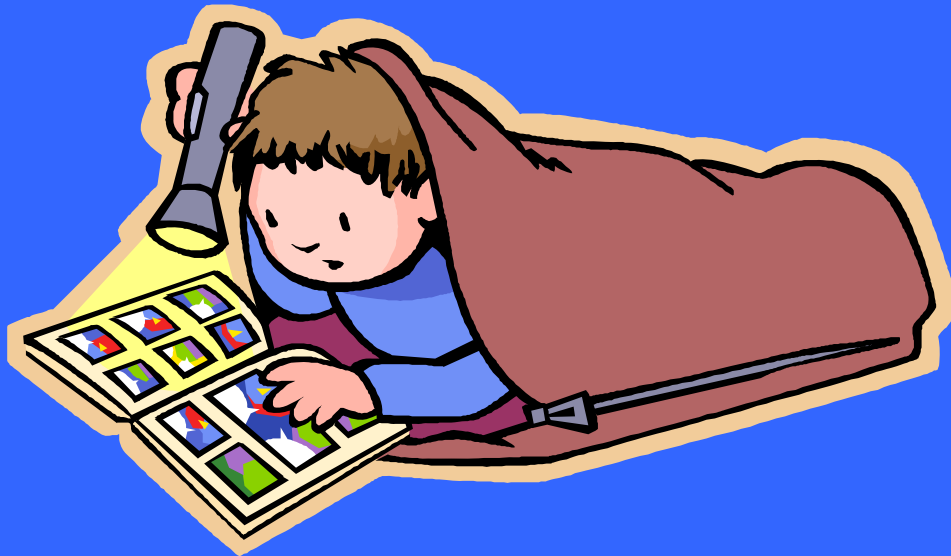
sn

tr



ag Family Word Slide

_____ ag



ag Family Word Slide
(Sound Blending)

Print on vellum, cut, and laminate for durability. Cut the top and bottom slits to the left of the rime chunk for the slide. Model proper use for students: blending to form and say new words.

b

br

dr

fl

g

j

l



n

r

s

sn

t

w

z



ail Family Word Slide

ail



ail Family Word Slide
(Sound Blending)

Print on vellum, cut, and laminate for durability. Cut the top and bottom slits to the left of the rime chunk for the slide. Model proper use for students: blending to form and say new words.

b

f

h

j

m

n

p



qu

r

s

sn

t

tr

w



ain Family Word Slide

ain



ain Family Word Slide
(Sound Blending)

Print on vellum, cut, and laminate for durability. Cut the top and bottom slits to the left of the rime chunk for the slide. Model proper use for students: blending to form and say new words.

br

ch

dr

g

gr

m

p



pl

r

sl

spr

st

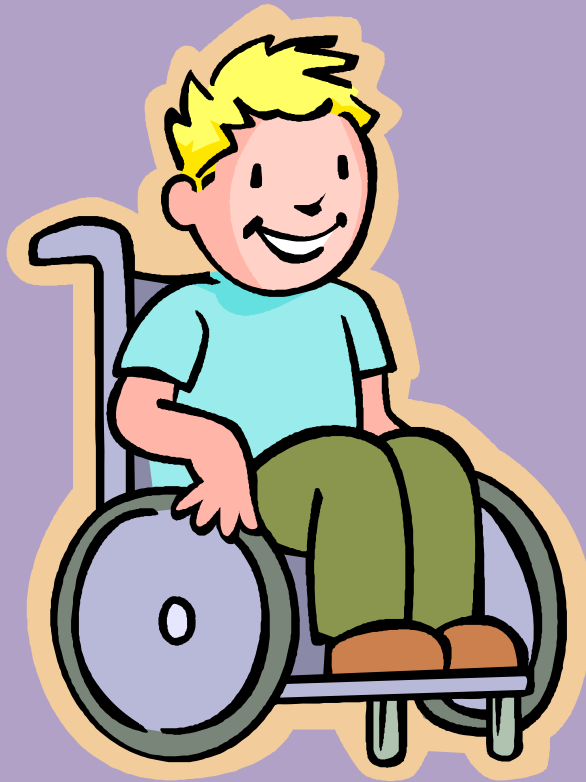
str

tr



air Family Word Slide

air



air Family Word Slide
(Sound Blending)

Print on vellum, cut, and laminate for durability. Cut the top and bottom slits to the left of the rime chunk for the slide. Model proper use for students: blending to form and say new words.

ch

f

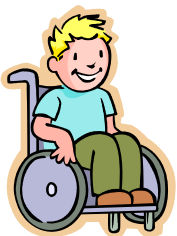
fl

h

l

p

st



ake Family Word Slide

ake



ake Family Word Slide
(Sound Blending)

Print on vellum, cut, and laminate for durability. Cut the top and bottom slits to the left of the rime chunk for the slide. Model proper use for students: blending to form and say new words.

b

br

c

f

fl

l

m



qu

r

s

sh

sn

t

w



all Family Word Slide

all



all Family Word Slide
(Sound Blending)

Print on vellum, cut, and laminate for durability. Cut the top and bottom slits to the left of the rime chunk for the slide. Model proper use for students: blending to form and say new words.

b

c

f

g

h

m

sm



squ

st

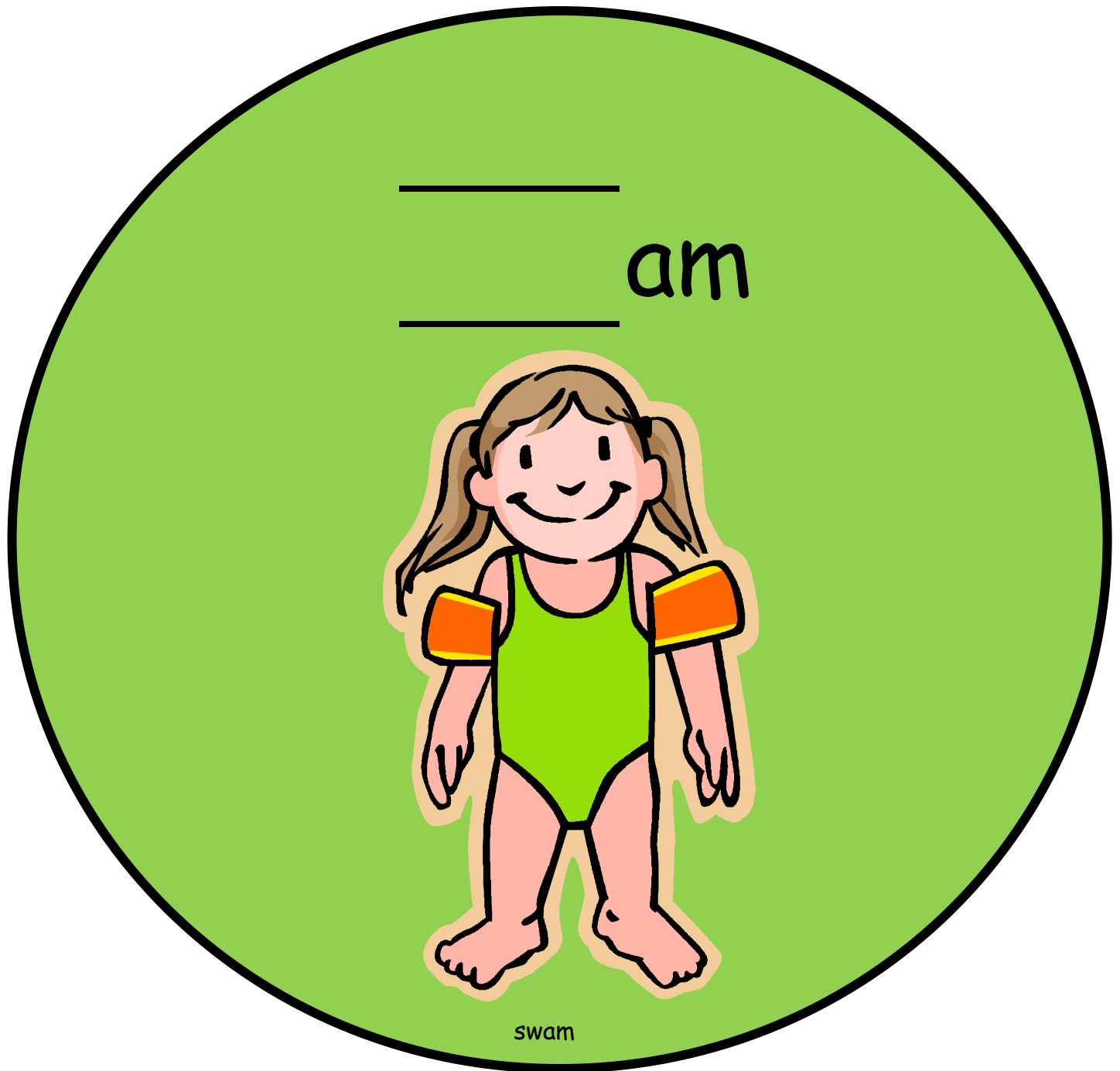
t

w

rec



am Family Word Slide



am Family Word Slide
(Sound Blending)

Print on vellum, cut, and laminate for durability. Cut the top and bottom slits to the left of the rime chunk for the slide. Model proper use for students: blending to form and say new words.

cl

cr

gr

h

r

scr



swam

sl

sw

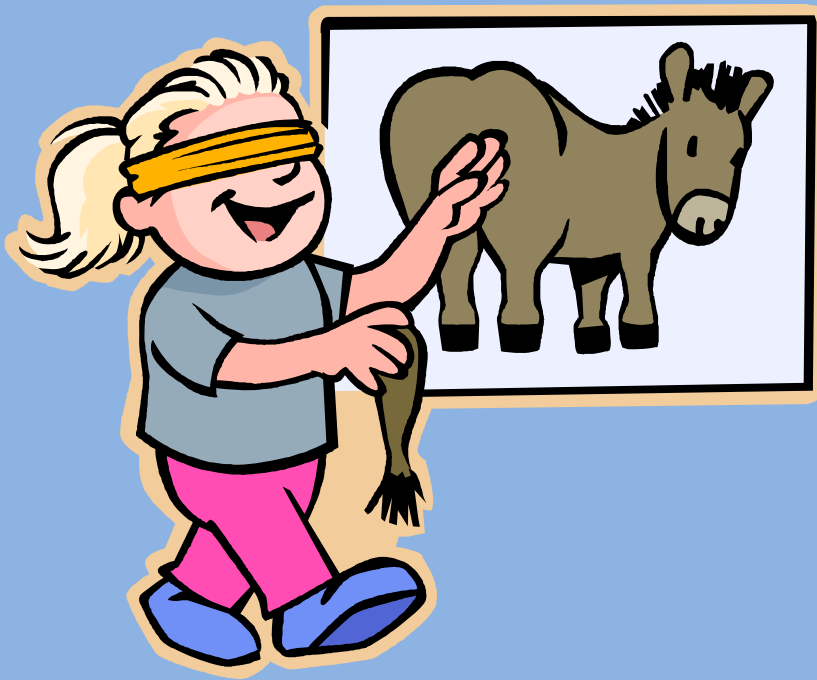
tr

wh

r

ame Family Word Slide

ame



ame Family Word Slide
(Sound Blending)

Print on vellum, cut, and laminate for durability. Cut the top and bottom slits to the left of the rime chunk for the slide. Model proper use for students: blending to form and say new words.

bl

c

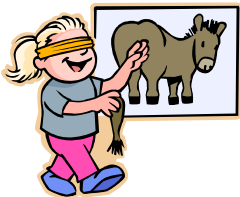
f

fl

g

l

n

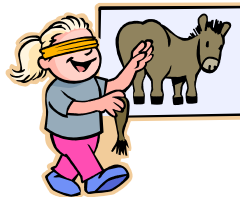


s

sh

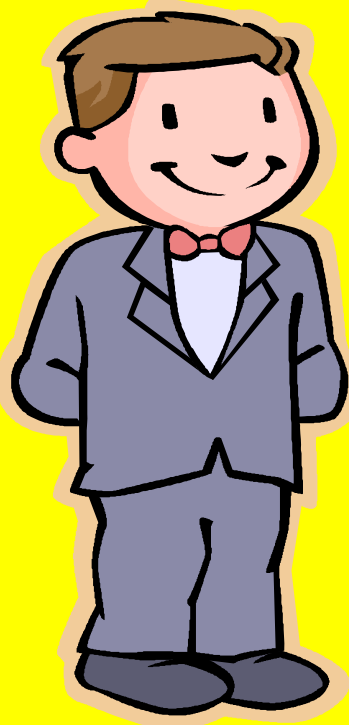
t

bec



an Family Word Slide

_____ an



an Family Word Slide
(Sound Blending)

Print on vellum, cut, and laminate for durability. Cut the top and bottom slits to the left of the rime chunk for the slide. Model proper use for students: blending to form and say new words.

b

br

c

cl

f

m

p



pl

r

s

sp

t

th

v



and Family Word Slide

_____ and



and Family Word Slide
(Sound Blending)

Print on vellum, cut, and laminate for durability. Cut the top and bottom slits to the left of the rime chunk for the slide. Model proper use for students: blending to form and say new words.

b

bl

br

gl

gr

h

l



s

st

str

exp



ane Family Word Slide

ane



ane Family Word Slide
(Sound Blending)

Print on vellum, cut, and laminate for durability. Cut the top and bottom slits to the left of the rime chunk for the slide. Model proper use for students: blending to form and say new words.

c

cr

l

m

p

pl

s



v

w



ank Family Word Slide

ank



ank Family Word Slide
(Sound Blending)

Print on vellum, cut, and laminate for durability. Cut the top and bottom slits to the left of the rime chunk for the slide. Model proper use for students: blending to form and say new words.

b

bl

cl

cr

dr

fr

pl



pr

r

s

shr

sp

t

th



ap Family Word Slide

_____ap



ap Family Word Slide
(Sound Blending)

Print on vellum, cut, and laminate for durability. Cut the top and bottom slits to the left of the rime chunk for the slide. Model proper use for students: blending to form and say new words.

d

ch

cl

fl

g

l

m



n

r

s

scr

sl

sn

str



t

tr

wr

y

z



art Family Word Slide

art



art Family Word Slide
(Sound Blending)

Print on vellum, cut, and laminate for durability. Cut the top and bottom slits to the left of the rime chunk for the slide. Model proper use for students: blending to form and say new words.

c

ch

d

m

p

sm

st



t

ap



ash Family Word Slide

____ ash



ash Family Word Slide
(Sound Blending)

Print on vellum, cut, and laminate for durability. Cut the top and bottom slits to the left of the rime chunk for the slide. Model proper use for students: blending to form and say new words.

b

br

c

cl

cr

d

fl



g

gn

h

l

m

r

s



sl

sm

spl

st

thr

tr



at Family Word Slide

_____ at



at Family Word Slide
(Sound Blending)

Print on vellum, cut, and laminate for durability. Cut the top and bottom slits to the left of the rime chunk for the slide. Model proper use for students: blending to form and say new words.

b

br

c

ch

f

fl

gn



h

m

p

r

s

spl

th



ate Family Word Slide

ate



ate Family Word Slide
(Sound Blending)

Print on vellum, cut, and laminate for durability. Cut the top and bottom slits to the left of the rime chunk for the slide. Model proper use for students: blending to form and say new words.

cr

d

f

g

gr

h

i



m

pl

r

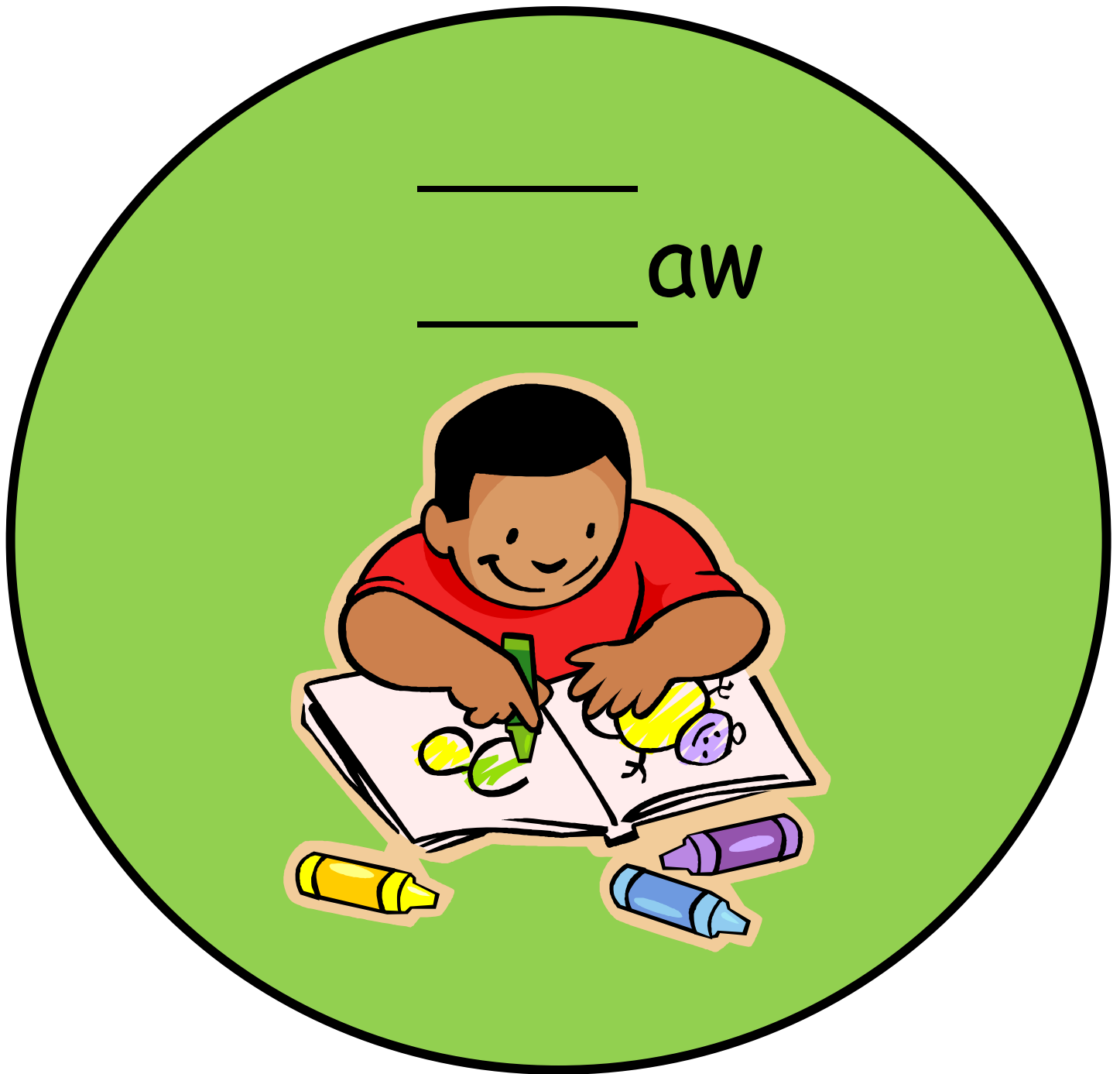
sk

sl

st



aw Family Word Slide



aw Family Word Slide
(Sound Blending)

Print on vellum, cut, and laminate for durability. Cut the top and bottom slits to the left of the rime chunk for the slide. Model proper use for students: blending to form and say new words.

c

cl

dr

fl

g

j

l



p

r

s

str

th



ay Family Word Slide

ay



ay Family Word Slide
(Sound Blending)

Print on vellum, cut, and laminate for durability. Cut the top and bottom slits to the left of the rime chunk for the slide. Model proper use for students: blending to form and say new words.

b

br

cl

d

fr

gr

h



l

m

p

pl

pr

r

s



sl

spr

st

str

sw

tr

w



ead Family Word Slide

ead



ead Family Word Slide
(Sound Blending)

Print on vellum, cut, and laminate for durability. Cut the top and bottom slits to the left of the rime chunk for the slide. Model proper use for students: blending to form and say new words.

b

kn

l

pl

r

agr



eat Family Word Slide

eat



eat Family Word Slide
(Sound Blending)

Print on vellum, cut, and laminate for durability. Cut the top and bottom slits to the left of the rime chunk for the slide. Model proper use for students: blending to form and say new words.

b

bl

ch

f

h

m

n



pl

s

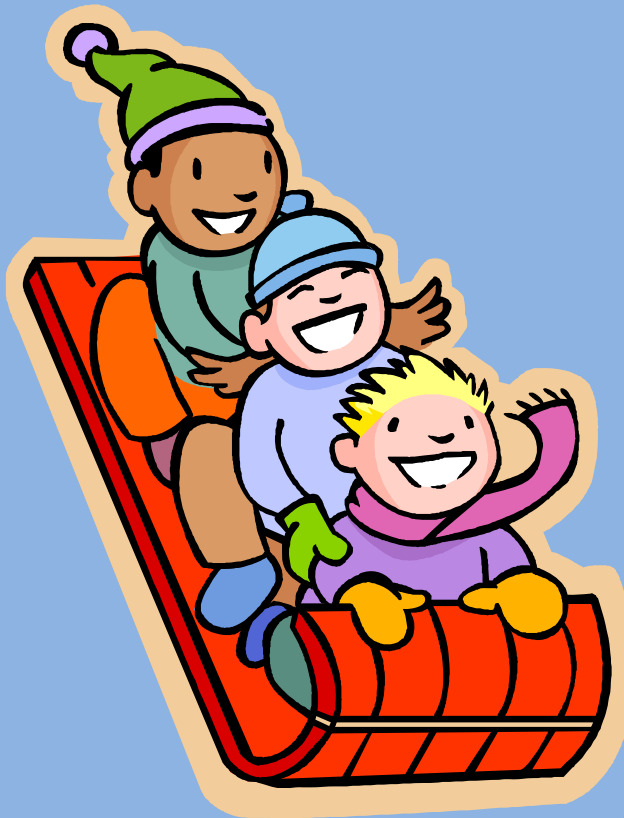
tr

wh



ed Family Word Slide

ed



ed Family Word Slide
(Sound Blending)

Print on vellum, cut, and laminate for durability. Cut the top and bottom slits to the left of the rime chunk for the slide. Model proper use for students: blending to form and say new words.

b

bl

br

f

fl

l

r



sh

shr

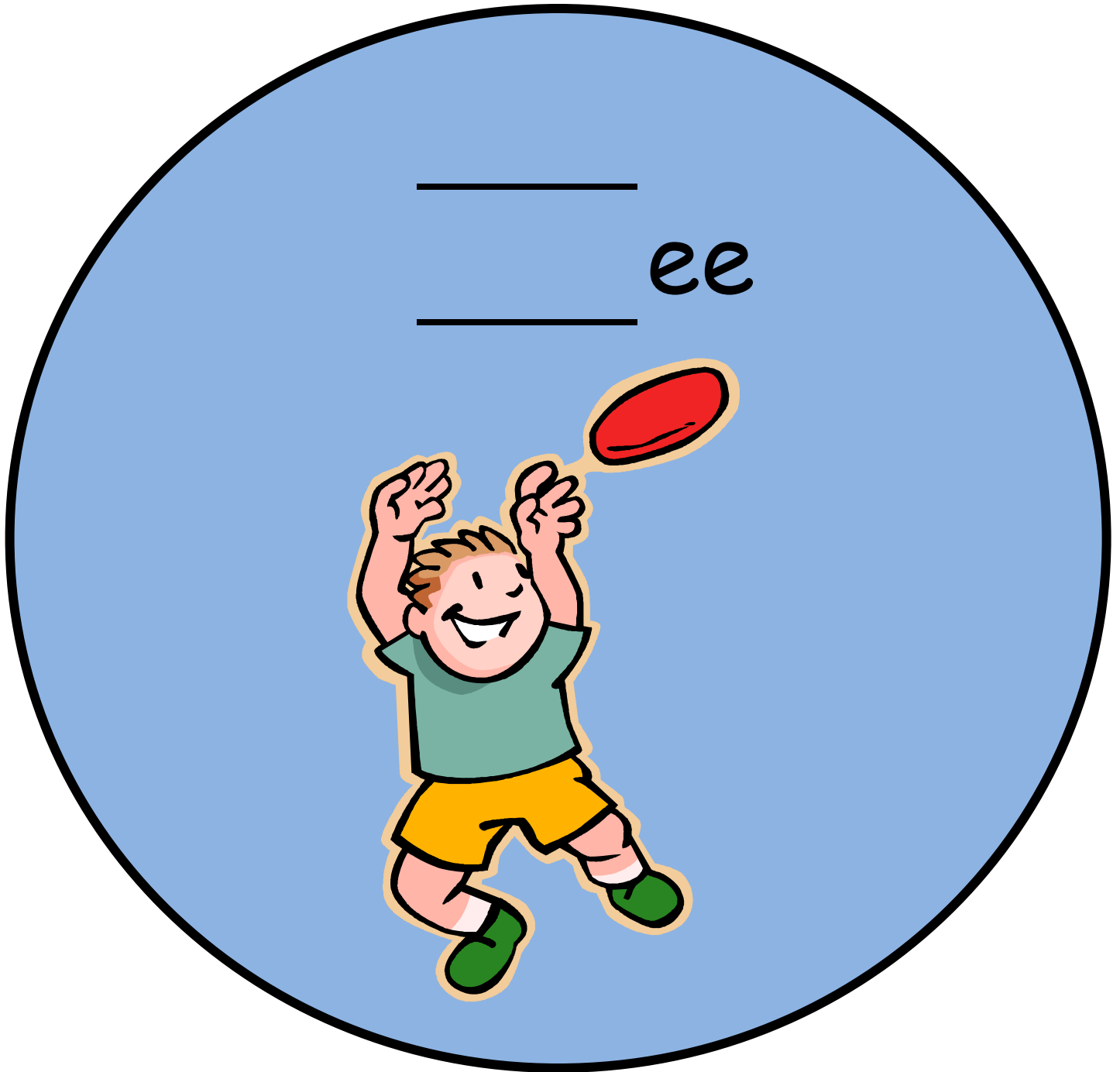
sl

sp

w



ee Family Word Slide



ee Family Word Slide
(Sound Blending)

Print on vellum, cut, and laminate for durability. Cut the top and bottom slits to the left of the rime chunk for the slide. Model proper use for students: blending to form and say new words.

b

f

fl

fr

g

gl

k



s

spr

t

thr

tr

agr



eed Family Word Slide

eed



eed Family Word Slide
(Sound Blending)

Print on vellum, cut, and laminate for durability. Cut the top and bottom slits to the left of the rime chunk for the slide. Model proper use for students: blending to form and say new words.

bl

br

cr

d

f

fr

gr



h

kn

n

r

s

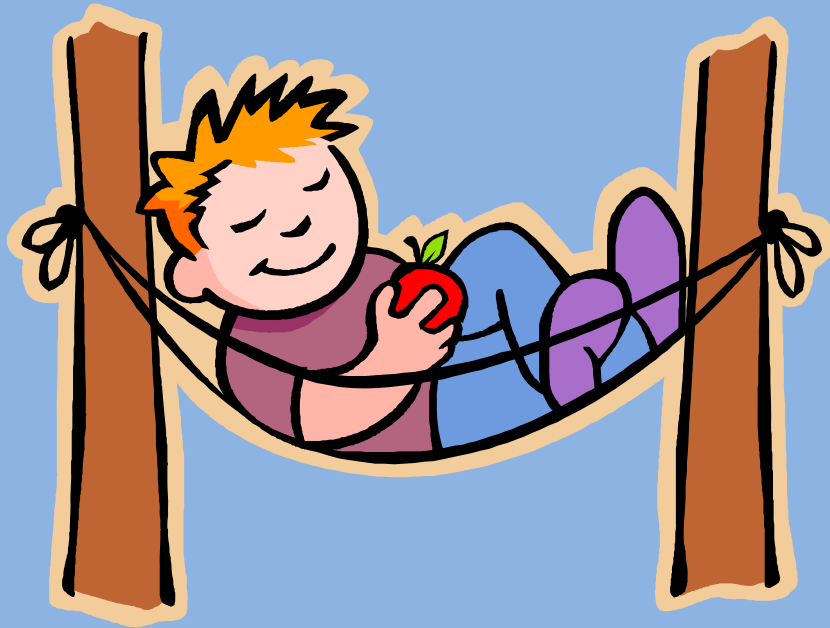
sp

st



eep Family Word Slide

____ eep



eep Family Word Slide
(Sound Blending)

Print on vellum, cut, and laminate for durability. Cut the top and bottom slits to the left of the rime chunk for the slide. Model proper use for students: blending to form and say new words.

b

bl

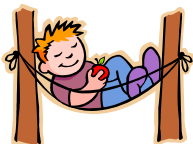
cr

d

j

k

p



s

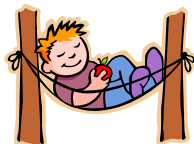
sh

sl

st

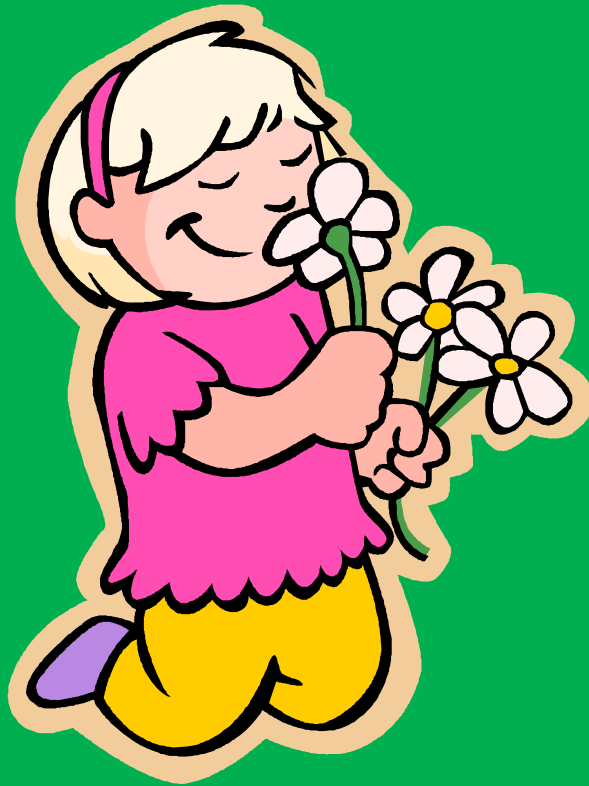
sw

w



ell Family Word Slide

ell



ell Family Word Slide
(Sound Blending)

Print on vellum, cut, and laminate for durability. Cut the top and bottom slits to the left of the rime chunk for the slide. Model proper use for students: blending to form and say new words.

b

c

f

j

s

sh

sm



sp

sw

t

w

y



en Family Word Slide

en



en Family Word Slide
(Sound Blending)

Print on vellum, cut, and laminate for durability. Cut the top and bottom slits to the left of the rime chunk for the slide. Model proper use for students: blending to form and say new words.

Cherry Carl, 2008

d

h

m

p

t

th

wh



ent Family Word Slide

ent



ent Family Word Slide
(Sound Blending)

Print on vellum, cut, and laminate for durability. Cut the top and bottom slits to the left of the rime chunk for the slide. Model proper use for students: blending to form and say new words.

b

c

d

g

l

r

sc



s

sp

t

v



ess Family Word Slide

ess



ess Family Word Slide
(Sound Blending)

Print on vellum, cut, and laminate for durability. Cut the top and bottom slits to the left of the rime chunk for the slide. Model proper use for students: blending to form and say new words.

Cherry Carl, 2008

bl

ch

dr

l

m

pr

str

y



est Family Word Slide

est



est Family Word Slide
(Sound Blending)

Print on vellum, cut, and laminate for durability. Cut the top and bottom slits to the left of the rime chunk for the slide. Model proper use for students: blending to form and say new words.

b

ch

cr

j

n

p

qu



r

t

v

w

z



et Family Word Slide

et



et Family Word Slide
(Sound Blending)

Print on vellum, cut, and laminate for durability. Cut the top and bottom slits to the left of the rime chunk for the slide. Model proper use for students: blending to form and say new words.

b

fr

g

j

m

n

p



s

v

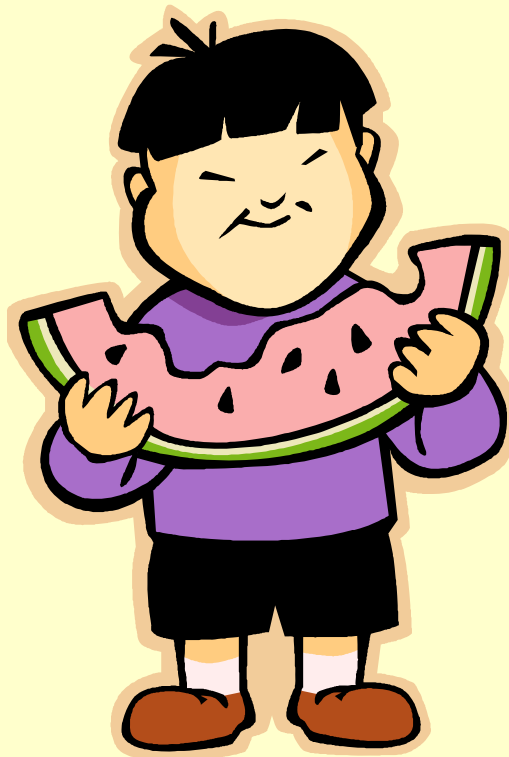
w

y



ew Family Word Slide

____ ew



ew Family Word Slide
(Sound Blending)

Print on vellum, cut, and laminate for durability. Cut the top and bottom slits to the left of the rime chunk for the slide. Model proper use for students: blending to form and say new words.

bl

br

ch

cr

d

dr

f



fl

gr

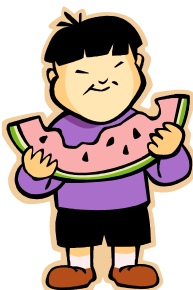
kn

m

n

p

st



ice Family Word Slide

ice



ice Family Word Slide
(Sound Blending)

Print on vellum, cut, and laminate for durability. Cut the top and bottom slits to the left of the rime chunk for the slide. Model proper use for students: blending to form and say new words.

d

l

m

n

pr

r

sl



sp

spl

tw



ick Family Word Slide

ick



ick Family Word Slide
(Sound Blending)

Print on vellum, cut, and laminate for durability. Cut the top and bottom slits to the left of the rime chunk for the slide. Model proper use for students: blending to form and say new words.

br

ch

cl

fl

k

l

n



p

qu

s

sl

st

th

tr



id Family Word Slide

_____ id



id Family Word Slide
(Sound Blending)

Print on vellum, cut, and laminate for durability. Cut the top and bottom slits to the left of the rime chunk for the slide. Model proper use for students: blending to form and say new words.

b

d

gr

h

k

l

r



sk

sl

squ



ide Family Word Slide

ide



ide Family Word Slide
(Sound Blending)

Print on vellum, cut, and laminate for durability. Cut the top and bottom slits to the left of the rime chunk for the slide. Model proper use for students: blending to form and say new words.

br

ch

gl

h

pr

r

s



sl

sm

str

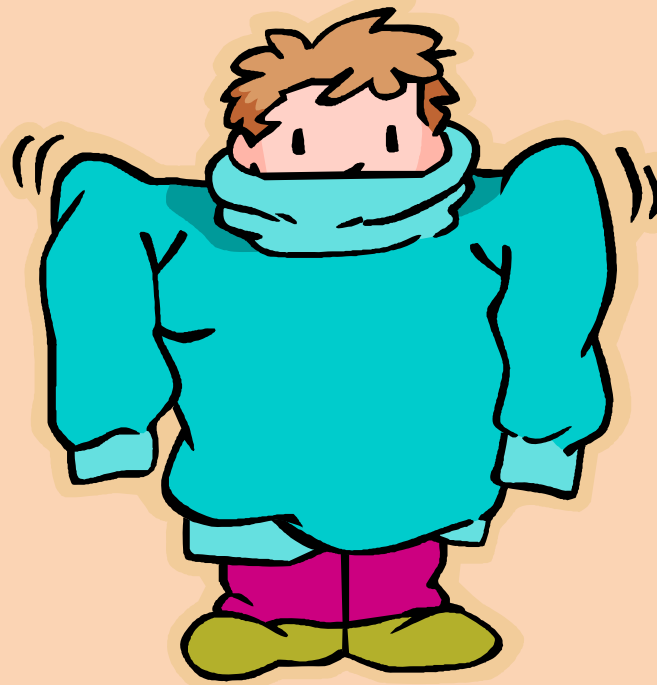
t

w



ig Family Word Slide

____ ig



ig Family Word Slide
(Sound Blending)

Print on vellum, cut, and laminate for durability. Cut the top and bottom slits to the left of the rime chunk for the slide. Model proper use for students: blending to form and say new words.

b

d

f

g

j

p

r



sw

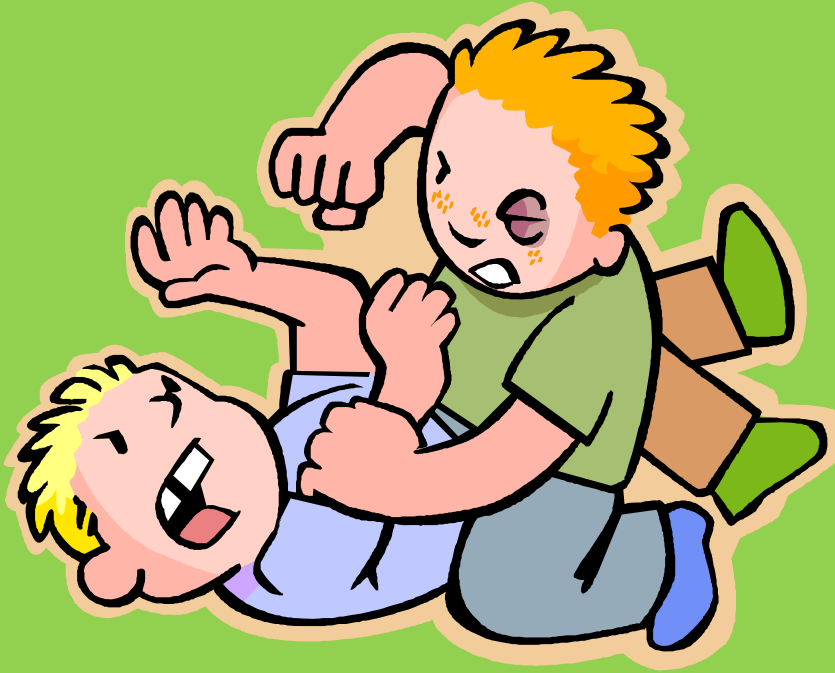
tw

w



ight Family Word Slide

ight



ight Family Word Slide
(Sound Blending)

Print on vellum, cut, and laminate for durability. Cut the top and bottom slits to the left of the rime chunk for the slide. Model proper use for students: blending to form and say new words.

bl

br

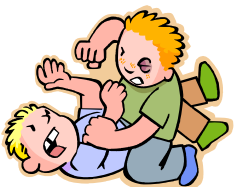
f

fl

fr

kn

l



m

n

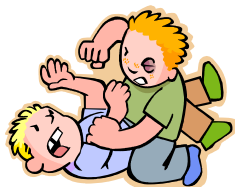
pl

r

s

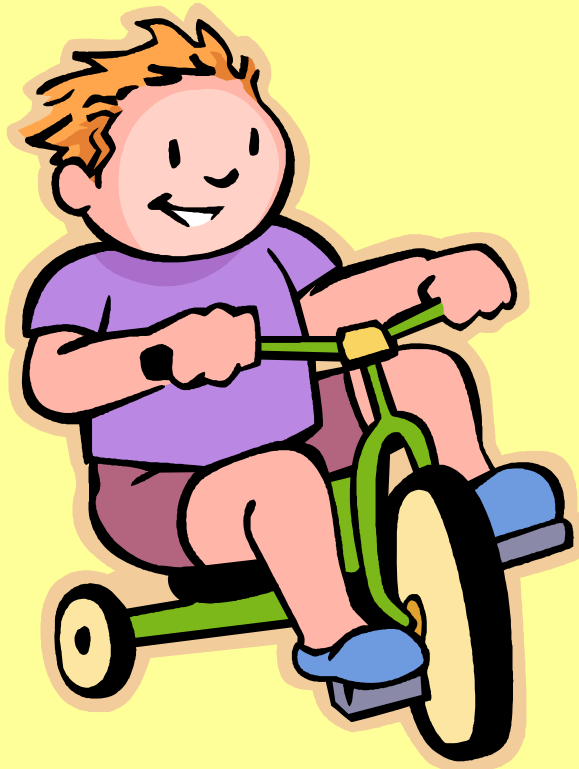
sl

t



ike Family Word Slide

ike



ike Family Word Slide
(Sound Blending)

Print on vellum, cut, and laminate for durability. Cut the top and bottom slits to the left of the rime chunk for the slide. Model proper use for students: blending to form and say new words.

b

h

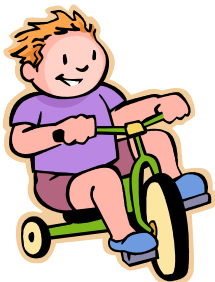
l

p

sp

str

tr



ile Family Word Slide

ile



ile Family Word Slide
(Sound Blending)

Print on vellum, cut, and laminate for durability. Cut the top and bottom slits to the left of the rime chunk for the slide. Model proper use for students: blending to form and say new words.

f

m

N

p

sm

t

wh



ill Family Word Slide

ill



ill Family Word Slide
(Sound Blending)

Print on vellum, cut, and laminate for durability. Cut the top and bottom slits to the left of the rime chunk for the slide. Model proper use for students: blending to form and say new words.

b

ch

d

dr

f

fr

g



gr

h

k

m

p

shr

s



sk

sp

st

thr

t

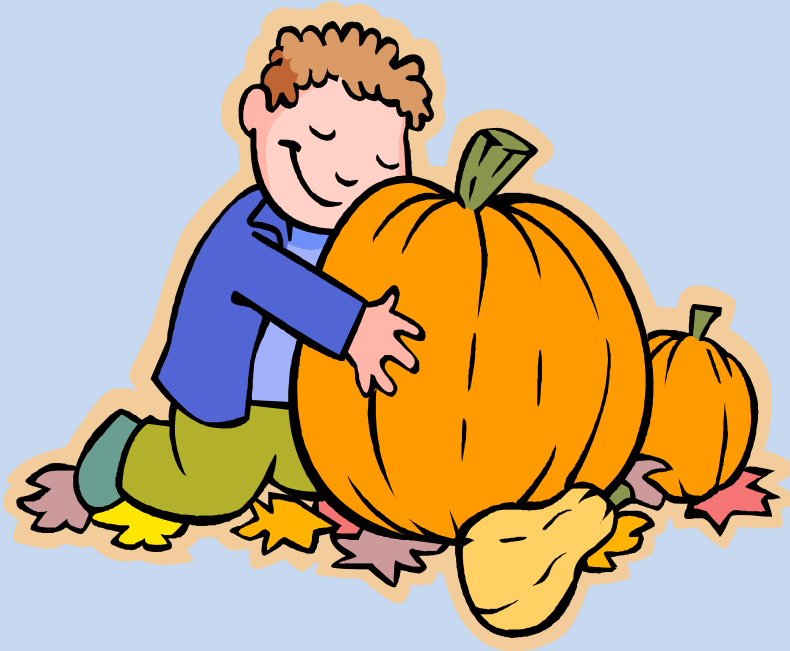
tr

w



in Family Word Slide

_____ in



in Family Word Slide
(Sound Blending)

Print on vellum, cut, and laminate for durability. Cut the top and bottom slits to the left of the rime chunk for the slide. Model proper use for students: blending to form and say new words.

b

ch

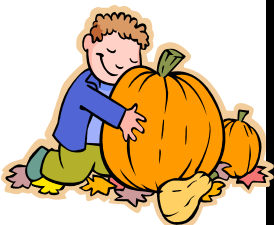
d

f

gr

k

p



s

sk

sp

th

t

tw

w



ind Family Word Slide

ind



ind Family Word Slide
(Sound Blending)

Print on vellum, cut, and laminate for durability. Cut the top and bottom slits to the left of the rime chunk for the slide. Model proper use for students: blending to form and say new words.

b

bl

f

gr

h

k



m

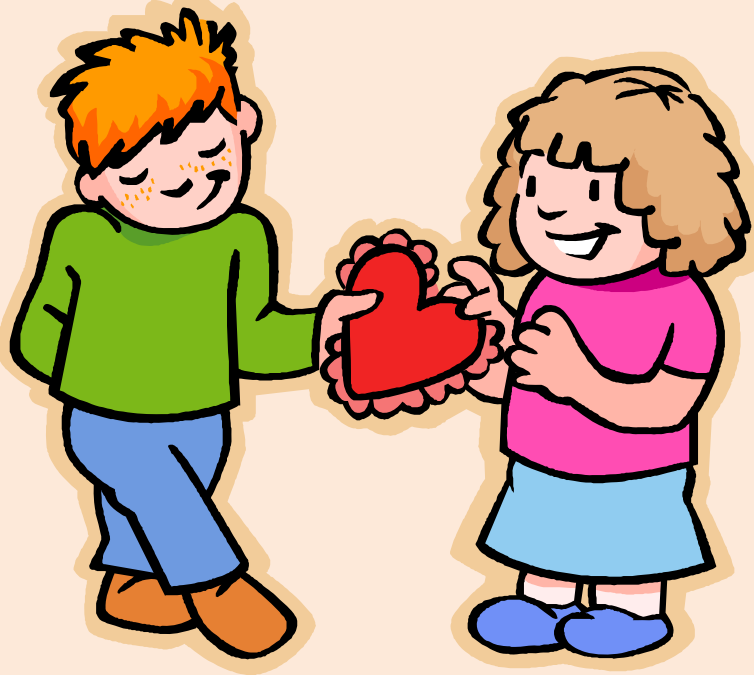
r

w



ine Family Word Slide

ine



ine Family Word Slide
(Sound Blending)

Print on vellum, cut, and laminate for durability. Cut the top and bottom slits to the left of the rime chunk for the slide. Model proper use for students: blending to form and say new words.

d

f

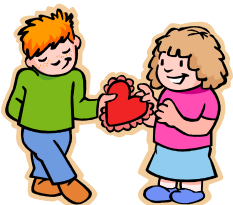
l

m

n

p

sh



shr

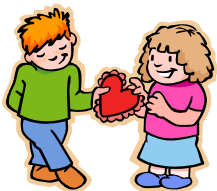
sp

sw

tw

v

wh



ing Family Word Slide

____ing



ing Family Word Slide
(Sound Blending)

Print on vellum, cut, and laminate for durability. Cut the top and bottom slits to the left of the rime chunk for the slide. Model proper use for students: blending to form and say new words.

br

cl

d

fl

k

p

r



s

sl

spr

st

str

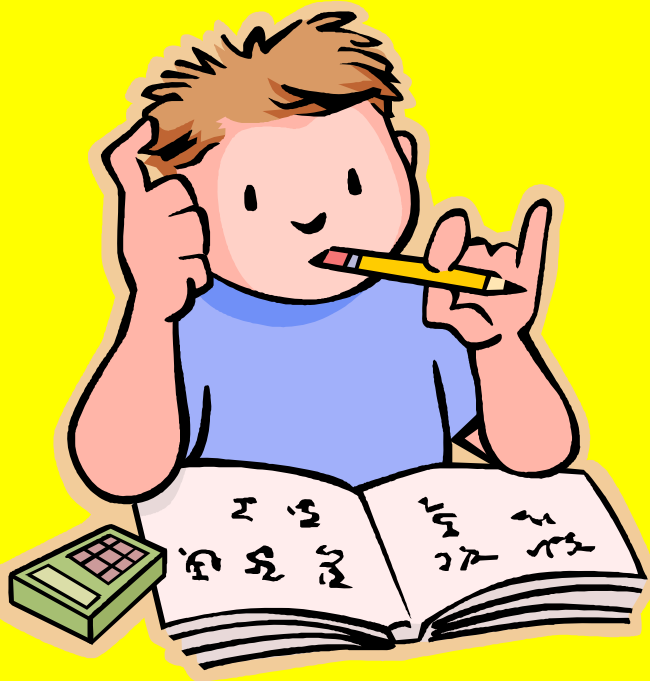
sw

th



ink Family Word Slide

ink



ink Family Word Slide
(Sound Blending)

Print on vellum, cut, and laminate for durability. Cut the top and bottom slits to the left of the rime chunk for the slide. Model proper use for students: blending to form and say new words.

bl

dr

l

m

p

r



shr

s

st

th

w



ip Family Word Slide

____ ip



ip Family Word Slide
(Sound Blending)

Print on vellum, cut, and laminate for durability. Cut the top and bottom slits to the left of the rime chunk for the slide. Model proper use for students: blending to form and say new words.

ch

cl

d

dr

fl

gr

h



l

n

r

sh

s

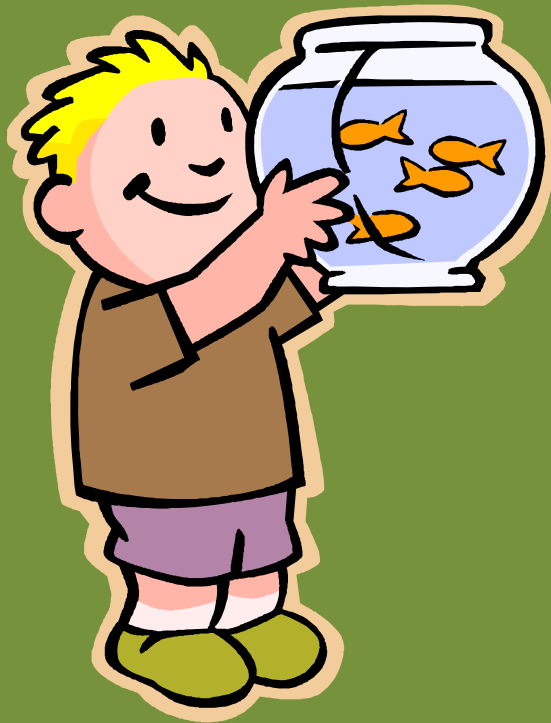
sk

tr



ish Family Word Slide

ish



ish Family Word Slide
(Sound Blending)

Print on vellum, cut, and laminate for durability. Cut the top and bottom slits to the left of the rime chunk for the slide. Model proper use for students: blending to form and say new words.

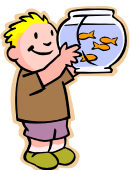
d

f

sw

Tr

w



it Family Word Slide

_____ it



it Family Word Slide
(Sound Blending)

Print on vellum, cut, and laminate for durability. Cut the top and bottom slits to the left of the rime chunk for the slide. Model proper use for students: blending to form and say new words.

b

f

gr

h

k

kn

l



p

qu

s

sk

sl

spl

w



oat Family Word Slide

oat



oat Family Word Slide
(Sound Blending)

Print on vellum, cut, and laminate for durability. Cut the top and bottom slits to the left of the rime chunk for the slide. Model proper use for students: blending to form and say new words.

bl

b

c

fl

gl

g



m

thr



ob Family Word Slide

_____ ob



my job

ob Family Word Slide
(Sound Blending)

Print on vellum, cut, and laminate for durability. Cut the top and bottom slits to the left of the rime chunk for the slide. Model proper use for students: blending to form and say new words.

bl

c

gl

g

j

kn

m



r

sl

s

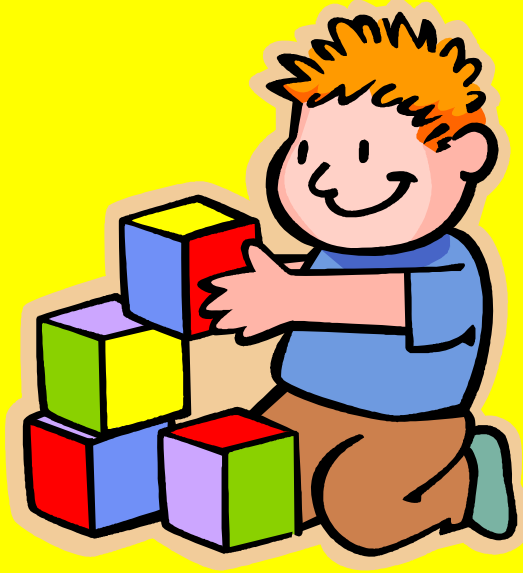
sn

thr



ock Family Word Slide

ock



ock Family Word Slide
(Sound Blending)

Print on vellum, cut, and laminate for durability. Cut the top and bottom slits to the left of the rime chunk for the slide. Model proper use for students: blending to form and say new words.

bl

cl

cr

d

fl

j

kn



l

m

r

sh

st

t



og Family Word Slide

og



og Family Word Slide
(Sound Blending)

Print on vellum, cut, and laminate for durability. Cut the top and bottom slits to the left of the rime chunk for the slide. Model proper use for students: blending to form and say new words.

bl

b

c

d

f

fr

h



j

l

sm



oke Family Word Slide

oke



oke Family Word Slide
(Sound Blending)

Print on vellum, cut, and laminate for durability. Cut the top and bottom slits to the left of the rime chunk for the slide. Model proper use for students: blending to form and say new words.

bl

br

ch

c

j

p



sm

sp

str

w

y



old Family Word Slide

old



ox Family Word Slide
(Sound Blending)

Print on vellum, cut, and laminate for durability. Cut the top and bottom slits to the left of the rime chunk for the slide. Model proper use for students: blending to form and say new words.

b

c

f

g

h

s

t



ole Family Word Slide

ole



ole Family Word Slide
(Sound Blending)

Print on vellum, cut, and laminate for durability. Cut the top and bottom slits to the left of the rime chunk for the slide. Model proper use for students: blending to form and say new words.

b

d

h

m

p



r

s

st

wh



one Family Word Slide

one



one Family Word Slide
(Sound Blending)

Print on vellum, cut, and laminate for durability. Cut the top and bottom slits to the left of the rime chunk for the slide. Model proper use for students: blending to form and say new words.

b

cl

c

dr

l

ph

p



pr

sc

sh

t

thr

t

z



ook Family Word Slide

ook



ook Family Word Slide
(Sound Blending)

Print on vellum, cut, and laminate for durability. Cut the top and bottom slits to the left of the rime chunk for the slide. Model proper use for students: blending to form and say new words.

b

br

c

cr

h

l



n

r

sh

t



oom Family Word Slide

oom



oom Family Word Slide
(Sound Blending)

Print on vellum, cut, and laminate for durability. Cut the top and bottom slits to the left of the rime chunk for the slide. Model proper use for students: blending to form and say new words.

b

bl

br

d

gl

gr



l

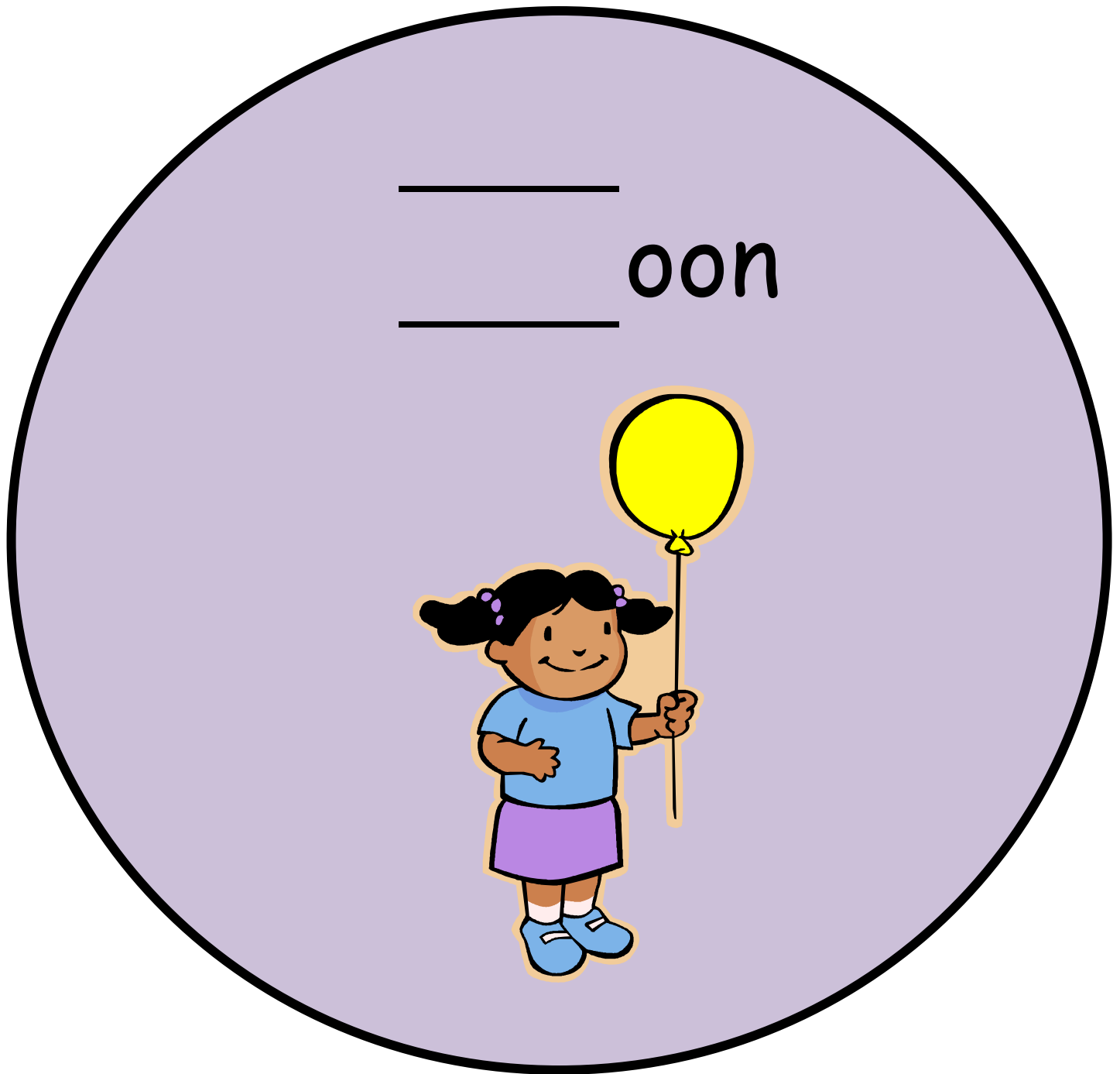
r

vr

z



oon Family Word Slide



oon Family Word Slide
(Sound Blending)

Print on vellum, cut, and laminate for durability. Cut the top and bottom slits to the left of the rime chunk for the slide. Model proper use for students: blending to form and say new words.

b

c

cr

l

m

n



s

sp

sw



op Family Word Slide

_____ op



op Family Word Slide
(Sound Blending)

Print on vellum, cut, and laminate for durability. Cut the top and bottom slits to the left of the rime chunk for the slide. Model proper use for students: blending to form and say new words.

ch

c

cr

dr

fl

h

l



m

pl

p

pr

sh

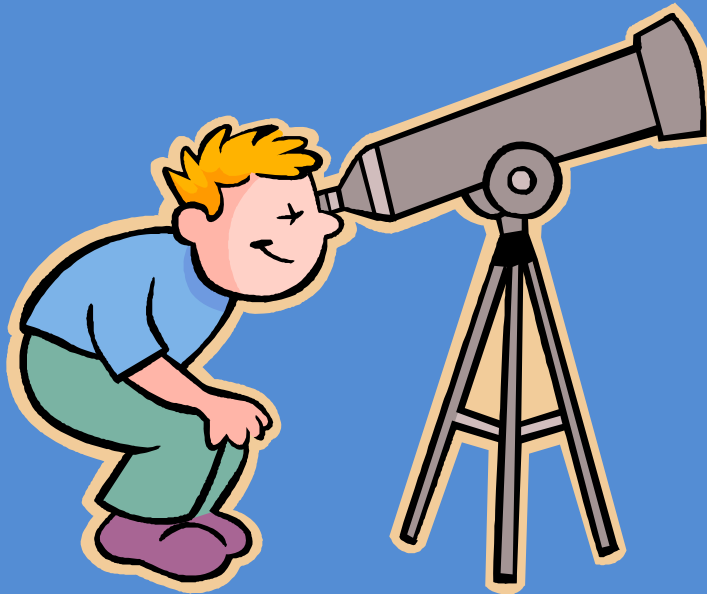
st

t



ope Family Word Slide

ope



ope Family Word Slide
(Sound Blending)

Print on vellum, cut, and laminate for durability. Cut the top and bottom slits to the left of the rime chunk for the slide. Model proper use for students: blending to form and say new words.

c

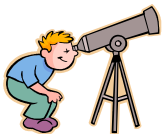
gr

l

m

n

p

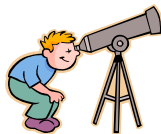


r

sc

sl

el



ore Family Word Slide

ore



my chore

ore Family Word Slide
(Sound Blending)

Print on vellum, cut, and laminate for durability. Cut the top and bottom slits to the left of the rime chunk for the slide. Model proper use for students: blending to form and say new words.

b

ch

c

f

g

l

m



sc

sh

sn

s

st

t

w



orn Family Word Slide

orn



orn Family Word Slide
(Sound Blending)

Print on vellum, cut, and laminate for durability. Cut the top and bottom slits to the left of the rime chunk for the slide. Model proper use for students: blending to form and say new words.

b

c

h

sc

sw

th



t

w

ad



ort Family Word Slide

ort



ort Family Word Slide
(Sound Blending)

Print on vellum, cut, and laminate for durability. Cut the top and bottom slits to the left of the rime chunk for the slide. Model proper use for students: blending to form and say new words.

f

p

sh

sn

s

sp



ose Family Word Slide

ose



ose Family Word Slide
(Sound Blending)

Print on vellum, cut, and laminate for durability. Cut the top and bottom slits to the left of the rime chunk for the slide. Model proper use for students: blending to form and say new words.

ch

cl

h

n

p



pr

r

th



ot Family Word Slide

_____ ot



ot Family Word Slide
(Sound Blending)

Print on vellum, cut, and laminate for durability. Cut the top and bottom slits to the left of the rime chunk for the slide. Model proper use for students: blending to form and say new words.

bl

cl

c

d

g

h

j



kn

l

n

pl

p

r

sp



ote Family Word Slide

ote



ote Family Word Slide
(Sound Blending)

Print on vellum, cut, and laminate for durability. Cut the top and bottom slits to the left of the rime chunk for the slide. Model proper use for students: blending to form and say new words.

d

n

qu

r

t

v

wr



out Family Word Slide

____ out



out Family Word Slide
(Sound Blending)

Print on vellum, cut, and laminate for durability. Cut the top and bottom slits to the left of the rime chunk for the slide. Model proper use for students: blending to form and say new words.

b

cl

p

sc

sh

sn

sp

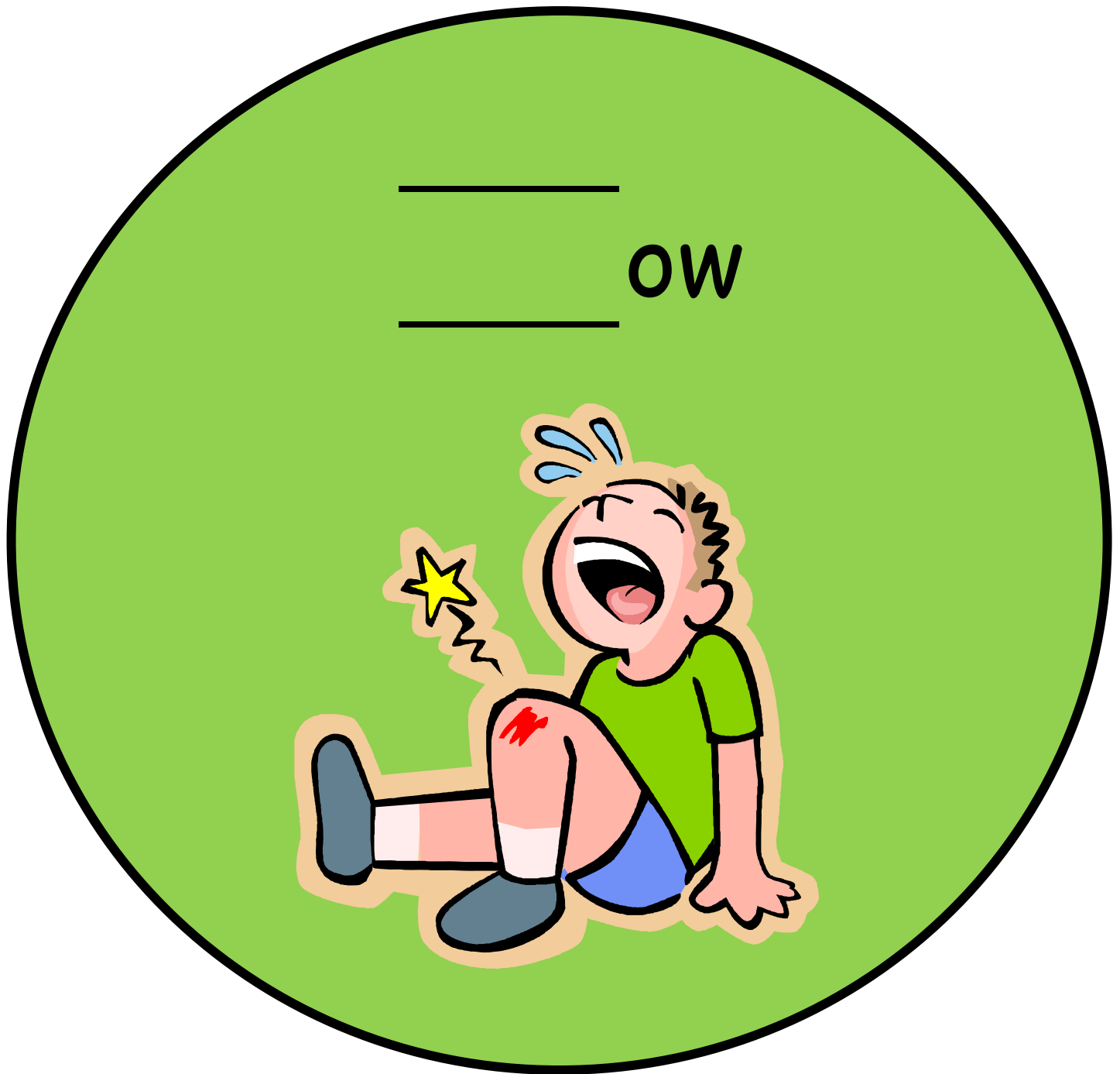


spr

st

tr

ow Family Word Slide



ow Family Word Slide
(Sound Blending)

Print on vellum, cut, and laminate for durability. Cut the top and bottom slits to the left of the rime chunk for the slide. Model proper use for students: blending to form and say new words.

b

br

ch

c

h

n

pl



p

r

s

v

w



ow Family Word Slide

OW



ow Family Word Slide
(Sound Blending)

Print on vellum, cut, and laminate for durability. Cut the top and bottom slits to the left of the rime chunk for the slide. Model proper use for students: blending to form and say new words.

bl

b

cr

fl

gl

gr

kn



l

m

r

sh

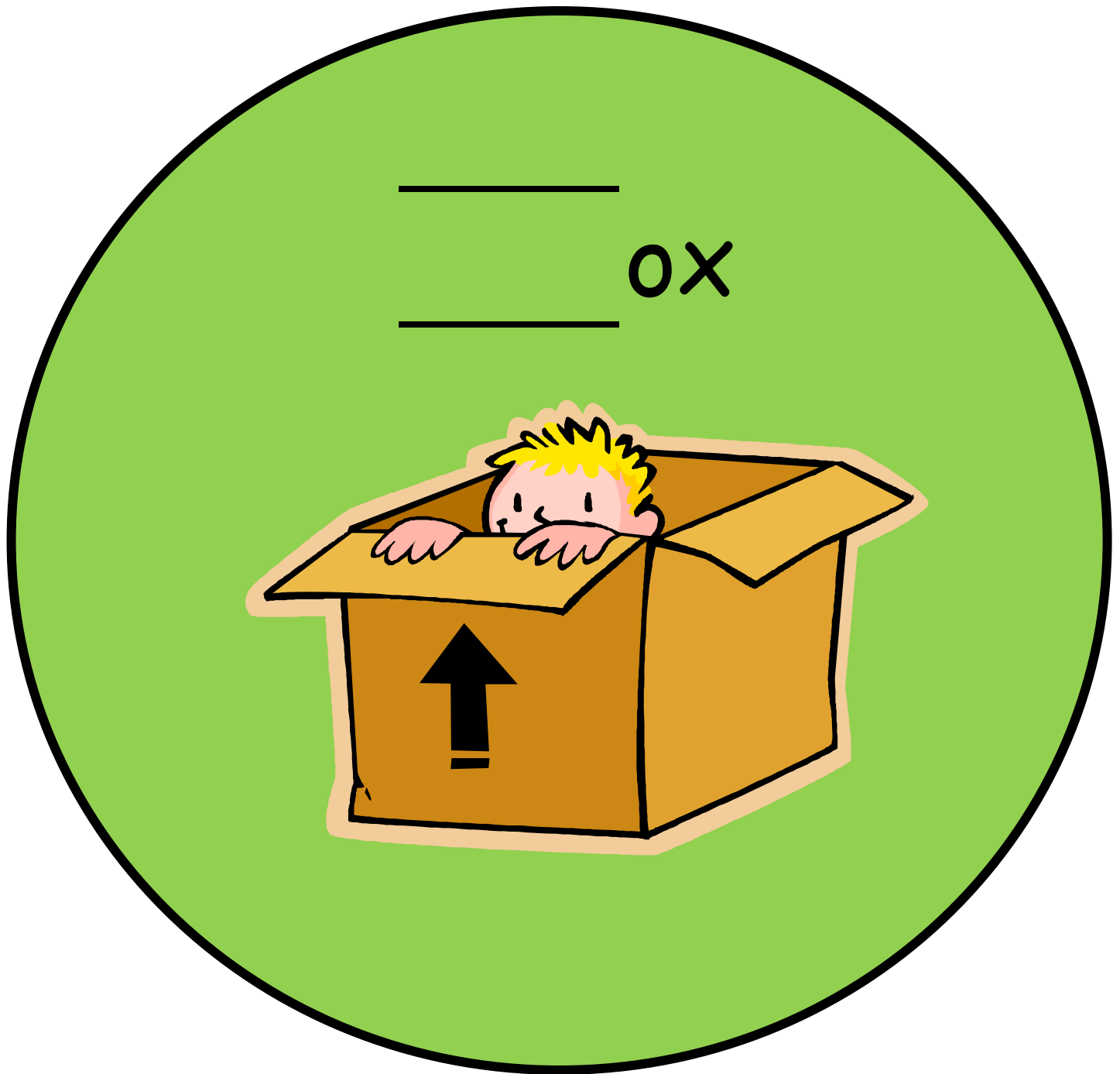
sl

sn

thr



ox Family Word Slide



ox Family Word Slide
(Sound Blending)

Print on vellum, cut, and laminate for durability. Cut the top and bottom slits to the left of the rime chunk for the slide. Model proper use for students: blending to form and say new words.

b

f

l

p

s



ub Family Word Slide

ub



ub Family Word Slide
(Sound Blending)

Print on vellum, cut, and laminate for durability. Cut the top and bottom slits to the left of the rime chunk for the slide. Model proper use for students: blending to form and say new words.

cl

c

fl

gr

r

scr



shr

sn

st

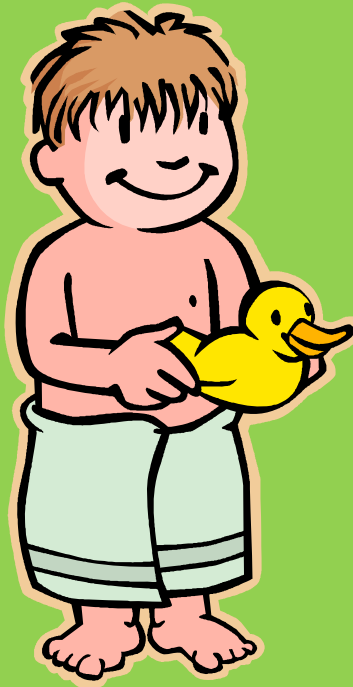
s

t



uck Family Word Slide

uck



uck Family Word Slide
(Sound Blending)

Print on vellum, cut, and laminate for durability. Cut the top and bottom slits to the left of the rime chunk for the slide. Model proper use for students: blending to form and say new words.

b

cl

d

l

pl

p

str



st

s

t

tr

y



ug Family Word Slide

_____ ug



ug Family Word Slide
(Sound Blending)

Print on vellum, cut, and laminate for durability. Cut the top and bottom slits to the left of the rime chunk for the slide. Model proper use for students: blending to form and say new words.

b

ch

d

gl

h

j

l



m

pl

r

sl

sn

th

t



ump Family Word Slide

ump



ump Family Word Slide
(Sound Blending)

Print on vellum, cut, and laminate for durability. Cut the top and bottom slits to the left of the rime chunk for the slide. Model proper use for students: blending to form and say new words.

b

cl

d

gr

h

j

l



pl

p

sl

st

th

tr



un Family Word Slide

un



un Family Word Slide
(Sound Blending)

Print on vellum, cut, and laminate for durability. Cut the top and bottom slits to the left of the rime chunk for the slide. Model proper use for students: blending to form and say new words.

b

f

n

p

r

s

sp



ut Family Word Slide

ut



ut Family Word Slide
(Sound Blending)

Print on vellum, cut, and laminate for durability. Cut the top and bottom slits to the left of the rime chunk for the slide. Model proper use for students: blending to form and say new words.

b

c

g

h

j

n

sh



y Family Word Slide

____y



y Family Word Slide
(Sound Blending)

Print on vellum, cut, and laminate for durability. Cut the top and bottom slits to the left of the rime chunk for the slide. Model proper use for students: blending to form and say new words.

b

cr

dr

fl

fr

my

pr



sh

sk

sl

sp

tr

wh

